

RV Door Window CloZures

www.zarcor.com 800-877-4797 972-380-8624

Parts included in kit

- Clear tempered glass
- CloZures® Shutter
- Weather Seal
- Control Lever
- All parts & fasteners

NOTE

If you are (only) installing the CloZures Shutter to an existing door window GO TO STEP #8

Tools Required

- Phillips #2 driver, hand-power
- Plastic putty knife
- Duct Tape
- Rubbing (isopropyl) alcohol
- Windex & Paper Towels

#1 EXTERIOR - Place Duct tape on 4 sides of frame/glass. Use small piece of tape to identify exterior frame and top of frame.



SUGGESTION Install with 2 persons

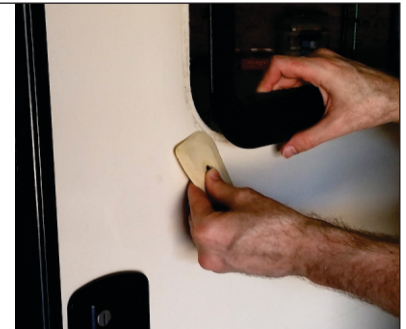


#2 INSIDE - Remove all 16 screws then remove frame.

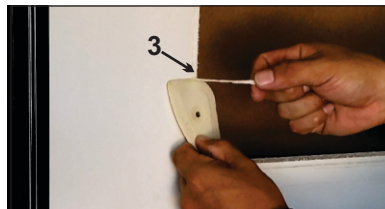
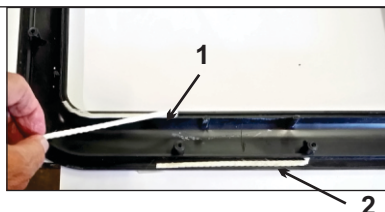
#3 FROM INSIDE - Remove glass from frame. If glass is adhered to frame because of weather seal, carefully separate with plastic putty knife



#4 EXTERIOR - Remove frame from exterior side of door. Use plastic putty knife to break seal if needed.



#5 Remove 100% of old weather seal from 3 areas. Area #1 - old seal between exterior frame & glass. #2 - seal between exterior frame and door. #3 - Old seal left on exterior door surface.



Ensure all weather seal residue is removed by cleaning (briskly) with rubbing alcohol.

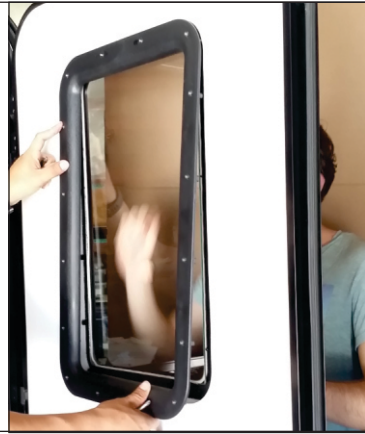


#6 on Exterior Frame - install bead of weather seal to both ridges. #1 seals glass. #2 seals frame to external door surface. Start and finish at bottom. If bead of weather seal breaks, overlap 2 ends by 1/8" and knead the semi-soft substance back together. Set glass in place on top of seal.

#7 INSIDE & OUTSIDE - 2 persons required.

From the outside, insert external frame (with glass in place) into window opening. Person on the inside, will help hold glass in place and insert inside frame which has the 4 corner screws pre-positioned. Fasten the 4 screws, then the remaining screws, but not the 2 screws in the bottom. They will be installed with the control lever. See inst #9

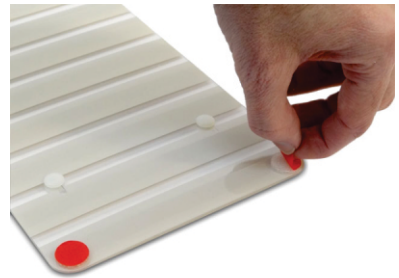
DO NOT OVER TIGHTEN SCREWS



#8 Installing Shutter to Door window

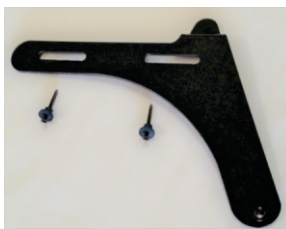


#8 Inside - Before removing red adhesive liners, practice placing shutter on clean glass. With CloZure label on the right side, set shutter on bottom ledge of frame then rotate on to glass.



To adhere the shutter to the clear door window, remove from the back side of the shutter, the 9 red adhesive liners, exposing the adhesive of the 3M Dual Lock fasteners (similar to Velcro). Next set the shutter on bottom ledge of frame then rotate onto glass. Press all 9 Velcro fasteners firmly to glass. To remove CloZure for cleaning, pull on shutter layer next to glass.

#9 Inside - Install control lever to frame using provided shoulder washers and screws, (2 ea.)



Push both shutter and control lever to extreme right. Attach control lever to shutter by pushing Velcro pad on back of control lever tab to Velcro pad on shutter. Note, there are 2 pads on the shutter.



The control lever may need to be attached to the second pad, depending on the location of the opening in the RV screen door.

Congratulations

You now have the features you've always wanted in a RV door window.

- Viewing ability*
- Privacy - Heat control*
- Light control - Security*

